

HARLEY-DAVIDSON®

2025 FALL/WINTER  
2026 SPRING/SUMMER

# TRAVEL GEAR CATALOG



# FALL/ WINTER 2025



New Fall/Winter 2025	<b>3 - 5</b>
New Spring/Summer 2026	<b>7 - 11</b>
Hardside Luggage & Accessories	<b>13 - 15</b>
Core Graphic Duffels & Backpacks	<b>17 - 18</b>
Core Backpacks	<b>20 - 24</b>
Core Collections	<b>26 - 43</b>
Starting Line-Up's	<b>44 - 47</b>
Last Call	<b>49 - 55</b>

## NEW Cruiser Softside Luggage

**Features:** Crafted from lightweight, durable polyester fabric with dual spinner wheels that glide smoothly over any surface. Includes an Expandable Carry-On for larger packing space, and an interior zippered compartment for efficient organization.

**Material:** Rugged, High-Density Polyester

**Size:** 22" — 23" x 14" x 10"

26" — 28" x 17" x 11"

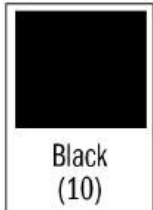
30" — 32" x 19" x 12"

**Model #:** 984-xx-22 — 22" Carry-On Exp Softside Spinner

984-xx-26 — 26" Softside Spinner

984-xx-30 — 30" Softside Spinner

984-xx-3S — 3PC Set (22", 26", 30")



## FEATURE OVERVIEW



**360-DEGREE  
SPINNER  
WHEELS**



**TROLLEY  
HANDLE**



**INTERIOR  
ORGANIZATION**



**EXPANDABLE**





## NEW Cruiser Backpack

**Features:** Accompanying design to the Cruiser Hardside & Softside Luggage Collections. Large Metal Bar & Shield logo on the front with two front zippered compartments. Padded top carry handle with padded backpack straps. Internal organization includes a Laptop compartment.

**Material:** Rugged, High-Density Polyester

**Size:** 18" x 13.5" x 6.5" (46 x 34 x 17 cm)

**Model #:** 98420



Black



## NEW Chest Sling Bag

**Features:** Blends style, comfort, and functionality. Features an ergonomic, adjustable strap, a large main compartment for essentials, and internal/external zippered pockets for smaller items.

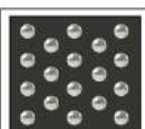
**Material:** Rugged, High-Density Polyester

**Size:** 15" x 10" x 5"

**Model #:** 99705



Willie G Skull



Moonshadow





## NEW Graphic Duffels

**Features:** U-shaped zip-top opening for easy access with a spacious interior main compartment. Crafted from durable polyester material with self-bound piping. Removable shoulder strap for carrying comfort.

**Material:** Rugged, high density polyester

**Capacity:** 29L

**Size:** 20" x 10" x 9" (51 x 25 x 23 cm)

**Model #:** 90410



## NEW Graphic Backpacks

**Features:** Zippered main compartment with front accessory pocket. Padded/adjustable backpack straps along with top carry handle.

**Material:** Rugged, high density polyester

**Capacity:** 17L

**Size:** 17" x 12.5" x 5" (43 x 31.5 x 13 cm)

**Model #:** 90815



# SPRING/ SUMMER 2026



New Fall/Winter 2025	3 - 5
New Spring/Summer 2026	7 - 11
Hardside Luggage & Accessories	13 - 15
Core Graphic Duffels & Backpacks	17 - 18
Core Backpacks	20 - 24
Core Collections	26 - 43
Starting Line-Up's	44 - 47
Last Call	49 - 55



## NEW Graphic Duffels

**Features:** U-shaped zip-top opening for easy access with a spacious interior main compartment. Crafted from durable polyester material with self-bound piping. Removable shoulder strap for carrying comfort.

**Material:** Rugged, high density polyester

**Capacity:** 29L

**Size:** 20" x 10" x 9" (51 x 25 x 23 cm)

**Model #:** 90410



## NEW Graphic Backpacks

**Features:** Zippered main compartment with front accessory pocket. Padded/adjustable backpack straps along with top carry handle.

**Material:** Rugged, high density polyester

**Capacity:** 17L

**Size:** 17" x 12.5" x 5" (43 x 31.5 x 13 cm)

**Model #:** 90815





## NEW Storm Backpack

**Features:** Offering both durability and a stylish design with an adjustable, padded shoulder strap, a spacious main compartment, and internal/external zippered pockets for essentials.

**Material:** Rugged, High-Density Polyester

**Size:** 18" x 12.5" x 6" (46 x 32 x 15 cm)

**Model #:** 92441



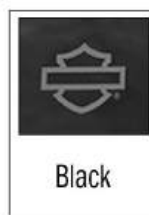
## NEW Boot Gear Bag

**Features:** Rugged, water-resistant exterior & interior. Features an easy-access opening to the padded main compartment, which protects boots. Padded Backpack straps, Ventilated Boot Pocket, and additional pockets for storage.

**Material:** Coated Ripstop Polyester

**Size:** 18" x 12" x 12" (45 x 30 x 30 cm)

**Model #:** 92449







## NEW Mega-Pack Backpack

**Features:** Combines the packability of a carry-on with the carrying comfort of a backpack. Features a large main compartment with compression straps and multiple external pockets that make it easy to organize.

**Material:** Rugged, High-Density Polyester

**Size:** 17" x 13" x 7.5" (43 x 33 x 19 cm)

**Model #:** 93510



## NEW Renegade III Backpack

**Features:** Spacious main compartment, external organization pockets, extra padded back support with a contour air flow design, and fast-adjusting straps for enhanced carrying comfort.

**Material:** Rugged, High-Density Polyester

**Size:** 18" x 14.5" x 10" (46 x 37 x 25 cm)

**Model #:** 99209





## Sportsman's Utility Case

**Features:** Provides protection for personal gear while keeping everything organized and accessible. Features a spacious, padded main compartment with room for various items for outdoor activities (Hunting, Fishing, Hiking, etc.).

**Material:** Rugged, High-Density Polyester

**Size:** 38.5" x 12" x 5.5" (98 x 30 x 14 cm)

**Model #:** 94958



Black



Realtree®  
Camo

**NEW**

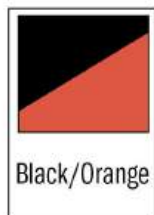
## **NEW** Nomad Gear Basket (Large)

**Features:** Makes travel and storage effortless. Crafted with a rugged aluminum frame, it offers exceptional flexibility for carrying gear and easily folds down for compact, convenient storage.

**Material:** Durable Outdoor Coated Polyester

**Size:** 25" x 13" x 17" (64 x 33 x 43 cm)

**Model #:** 95275



Black/Orange



## **NEW** Black Opal II Backpack

**Features:** The durable, water-resistant Nylon bag has a spacious main compartment, an interior laptop compartment, and padded backpack straps.

**Material:** Fashionable Nylon

**Size:** 17" x 11.5" x 6" (43 x 29 x 15 cm)

**Model #:** 94520



## **NEW** Black Opal II Over-Under Weekender Duffel

**Features:** This sleek duffel boasts a durable, water-resistant nylon exterior, an easy-access main compartment, a separate bottom compartment for shoes, and a padded shoulder strap for enhanced carrying comfort.

**Material:** Fashionable Nylon

**Size:** 18" x 11.5" x 9.5" (46 x 29 x 24 cm)

**Model #:** 94530





# HARDSIDE & ACCESSORIES



New Fall/Winter 2025	3 - 5
New Spring/Summer 2026	7 - 11
Hardside Luggage & Accessories	13 - 15
Core Graphic Duffels & Backpacks	17 - 18
Core Backpacks	20 - 24
Core Collections	26 - 43
Starting Line-Up's	44 - 47
Last Call	49 - 55



## Cruiser Hardside Luggage

**Features:** Rugged & lightweight hardside shell to protect your belongings. Expandable main compartment provides extra packing capacity when needed. Interior organization pockets & tie-down straps. Patented Shark Wheels for effortlessly gliding over any terrain. Built-in TSA-approved combination lock.

**Material:** Polycarbonate

**Size:** 17" (Carry-On) — 17" x 12" x 8" (43 x 30 x 20 cm)  
 22" (Carry-On) — 22" x 14" x 10" (56 x 36 x 25 cm)  
 26" (Medium) — 26" x 17" x 11.5" (66 x 43 x 29 cm)  
 30" (Large) — 30" x 20" x 13" (76 x 51 x 33 cm)  
 \*All are expandable up to 2.5" (6cm) except the 17"

**Model #:** 17" — 979-xx-17  
 22" — 979-xx-22  
 26" — 979-xx-26  
 30" — 979-xx-30  
 3 PC Set — 979-xx-3S  
 4 PC Set — 979-xx-4S



## FEATURE OVERVIEW



**SHARK  
WHEELS**



**TROLLEY  
HANDLE**



**INTERIOR  
ORGANIZATION**



**TSA LOCK**

## Hardside Luggage



### Touring Hardside Luggage

**Features:** Rugged & lightweight hardside shell to protect your belongings. Expandable main compartment provides extra packing capacity when needed. Interior organization pockets & tie-down straps. Patented Shark Wheels for effortlessly gliding over any terrain. Built-in TSA-approved combination lock.

**Material:** Polycarbonate

**Size:** 22" (Carry-On) — 22" x 14" x 10" (56 x 36 x 25 cm)

26" (Medium) — 26" x 17" x 11.5" (66 x 43 x 29 cm)

30" (Large) — 30" x 20" x 13" (76 x 51 x 33 cm)

\*All are expandable up to 2.5" (6cm)

**Model #:** 22" — 968-xx-22

26" — 968-xx-26

30" — 968-xx-30

3 PC Set — 968-xx-3S



Airline Approved  
Carry-On

## FEATURE OVERVIEW



**SHARK  
WHEELS**



**TROLLEY  
HANDLE**



**INTERIOR  
ORGANIZATION**



**TSA LOCK**





## 3PC Expandable Packing Cube Set

**Features:** Simplifies packing, keeping items neatly organized and easy to access. Each cube is expandable for extra capacity and has an exterior handle for effortless carrying.

**Material:** Polyester

**Graphic:** Bar & Shield

**Size:** 3PC Set (Sm, Md, Lg)

**Model #:** 951-99-3S



## Luggage Tag

**Features:** The perfect accessory for any bag, featuring three iconic Harley-Davidson logos that add a personal touch. Each tag includes an interior name card for easy identification. 2 PC Sets of tags.

**Material:** Rubber

**Graphic:** Bar & Shield, Willie G, Sport Stripe

**Size:** 4" H x 2.5" L

**Model #:** 952-99-00



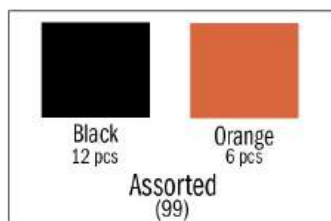
## TSA Combination Lock

**Features:** TSA-approved locks that help to keep personal items secure with a 3-digit code. Flexible stainless-steel cable that easily loops through anything you need to secure.

**Material:** Metal

**Graphic:** Harley-Davidson

**Model #:** 935-99-00



# CORE GRAPHIC DUFFELS & BACKPACKS

CORE GRAPHIC DUFFELS & BACKPACKS



New Fall/Winter 2025	3 - 5
New Spring/Summer 2026	7 - 11
Hardside Luggage & Accessories	13 - 15
Core Graphic Duffels & Backpacks	17 - 18
Core Backpacks	20 - 24
Core Collections	26 - 43
Starting Line-Up's	44 - 47
Last Call	49 - 55



**NEW  
FW25**



**NEW  
SS26**



## Graphic Duffels

**Features:** U-shaped zip-top opening for easy access with a spacious interior main compartment. Crafted from durable polyester material with self-bound piping. Removable shoulder strap for carrying comfort.

**Material:** Rugged, high density polyester

**Graphic:** Various

**Capacity:** 29L

**Size:** 20" x 10" x 9" (51 x 25 x 23 cm)

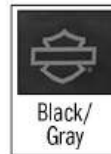
**Model #:** 90410



Pink/Rose



Black/  
Orange



Black/  
Gray



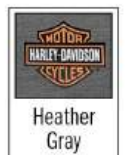
Black/  
White Eagle



Number 1



Rust Vintage



Heather  
Gray





## Graphic Backpacks — New Colors



American  
Flag

**NEW  
FW25**



Grape Leaf/  
Willie G Skull

**NEW  
SS26**



### Graphic Backpacks

**Features:** Zippered main compartment with front accessory pocket. Padded/adjustable backpack straps along with top carry handle.

**Material:** Rugged, high density polyester

**Graphic:** Various

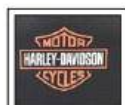
**Capacity:** 17L

**Size:** 17" x 12.5" x 5" (43 x 31.5 x 13 cm)

**Model #:** 90815



Black/  
White Eagle



Black/  
Orange



Black/  
Gray



# CORE BACKPACKS



New Fall/Winter 2025	3 - 5
New Spring/Summer 2026	7 - 11
Hardside Luggage & Accessories	13 - 15
Core Graphic Duffels & Backpacks	17 - 18
Core Backpacks	20 - 24
Core Collections	26 - 43
Starting Line-Up's	44 - 47
Last Call	49 - 55

## Core Backpacks



### Steel-Cable II Backpack

**Features:** Padded back panel and adjustable backpack straps. Multiple organizational features include a padded laptop sleeve, zippered interior compartments, padded Eyeglasses Pocket, and an external water bottle pocket.

**Material:** Rugged, high-density polyester

**Graphic:** Reflective Classic Bar & Shield

**Capacity:** 28L

**Size:** 18" x 12" x 8" (47 x 30 x 20 cm)

**Model #:** 99225



### Fly-Weave Backpack

**Features:** Ultra-lightweight backpack. Easy access to spacious main compartment, with padded laptop compartment. Comfortable padded back support and adjustable mesh straps.

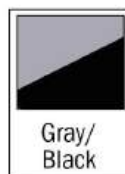
**Material:** Fly-Weave

**Graphic:** Bar & Shield

**Capacity:** 25L

**Size:** 19" x 11.5" x 7" (48 x 29 x 18 cm)

**Model #:** 98227



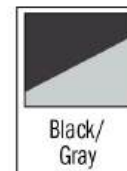




## Helmet Bag

**Features:** Fits both half and full-size helmets. Lined with soft faux wool, providing protection against scratches. Hideaway backpack straps, and reflective piping.

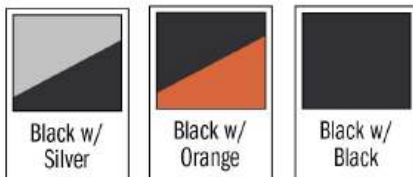
**Material:** Rugged, high-density polyester  
**Graphic:** Classic Bar & Shield  
**Capacity:** 33L  
**Size:** 14" x 13" x 11" (35 x 33 x 28 cm)  
**Model #:** 99308



## Legend Backpack

**Features:** Multiple exterior pockets for easy organization, quick access side-load laptop compartment, cushioned straps and back panel for carrying comfortably

**Material:** Rugged, high-density polyester  
**Graphic:** 3D Classic Rubber Bar & Shield  
**Capacity:** 28L  
**Size:** 19" x 13" x 8" (48 x 33 x 20 cm)  
**Model #:** 90231



## Core Backpacks



### Oil Slick Backpack

**Features:** Multiple exterior pockets for optimal organization, including a fleece-lined zippered pocket for glasses. Dedicated padded laptop compartment provides protection for tech gear.

**Material:** Rugged, high-density polyester

**Graphic:** Printed logos

**Capacity:** 32L

**Size:** 19" x 12.5" x 8.3" (48 x 32 x 21 cm)

**Model #:** 90622



Black



### Quick-Draw Backpack

**Features:** Dual draw string converts to backpack or carry all bag, Large opening for gear on-the-go

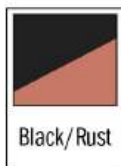
**Material:** Rugged, high density polyester

**Graphic:** Various logo's

**Capacity:** 3.8L

**Size:** 17" H x 13.75" L (43 x 35 cm)

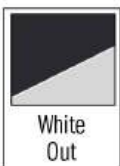
**Model #:** 98667



Black/Rust



Heather Gray



White Out



Vintage Rust



### Zero Gravity Backpack

**Features:** Lightweight and travel-ready, zippered accessory pockets to secure personal items, fully padded straps, and cushioned back panel with air-mesh for carrying comfort

**Material:** Water-resistant nylon

**Graphic:** Embroidered Classic Harley-Davidson Bar & Shield

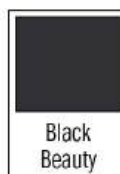
**Capacity:** 13L

**Size:** 18" x 10" x 6" (46 x 25 x 6 cm)

**Model #:** 90229



Pearl Black



Black Beauty





## Rebel Backpack

**Features:** Three front pockets to organize essentials, daisy chain loops to clip extra gear, adjustable compression straps to secure belongings

**Material:** Rugged, high-density polyester

**Graphic:** Embroidered Velcro HD logo

**Capacity:** 21L

**Size:** 18" x 12" x 6" (46 x 30 x 15 cm)

**Model #:** 90230



## Realtree® APG Backpack

**Features:** Three front pockets to organize essentials, daisy chain loops to clip extra gear, adjustable compression straps to secure belongings

**Material:** Rugged, High-Density Polyester

**Graphic:** APG Realtree Bar & Shield

**Capacity:** 21L

**Size:** 18" x 12" x 6" (46 x 30 x 15 cm)

**Model #:** 90230





## Core Backpacks



### Nomad Backpack

**Features:** Lightweight, durable construction, easy-access main compartment with padded laptop sleeve to pack and secure belongings, padded back panel and shoulder straps provide comfort when carrying

**Material:** Water-resistant polyester

**Graphic:** Bar & Shield Logo & Letters

**Capacity:** 20L

**Size:** 20" x 10" x 6" (51 x 25 x 15 cm)

**Model #:** 90233



Black  
Beauty w/  
Wild Lime



Grape Leaf  
w/ Black

### Racing Backpack

**Features:** Dedicated laptop compartment offers plenty of padded protection, stylish bungee cords with clips compress and secure belongings, zippered, softly lined sunglasses pocket

**Material:** Lightweight water-resistant fabric

**Graphic:** 3D Rubber Bar & Shield

**Capacity:** 30L

**Size:** 19.5" x 12" x 6.5" (50 x 30.5 x 16.5 cm)

**Model #:** 90546



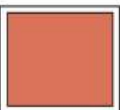
Charcoal  
Camo



Black



Blue



Rust



### Renegade II USB Backpack

**Features:** External USB Port for easy access to personal power bank, hideaway rain cover to keep belongings dry, protective eyeglass pocket with non-scratch interior

**Material:** Lightweight, water-resistant fabric

**Graphic:** Raised Rubber Bar & Shield

**Capacity:** 31L

**Size:** 18" x 13" x 8" (46 x 33 x 20 cm)

**Model #:** 99207



Black



Rust/Black

# CORE COLLECTIONS



New Fall/Winter 2025	<b>3 - 5</b>
New Spring/Summer 2026	<b>7 - 11</b>
Hardside Luggage & Accessories	<b>13 - 15</b>
Core Graphic Duffels & Backpacks	<b>17 - 18</b>
Core Backpacks	<b>20 - 24</b>
Core Collections	<b>26 - 43</b>
Starting Line-Up's	<b>44 - 47</b>
Last Call	<b>49 - 55</b>



## Vintage Backpack

**Features:** Exterior with multiple HD patches and logos with leather details. Interior and exterior pockets for easy organization. Padded, adjustable backpack straps for carrying comfort.

**Material:** Durable Canvas

**Graphic:** Multiple Patches + Prints

**Capacity:** 20L

**Size:** 17" x 12" x 6" (43 x 30 x 15 cm)

**Model #:** 92445



## Vintage Duffel

**Features:** Exterior with multiple HD patches and logos, leather details, and antiqued brass hardware. Secure, double-zip top opens to a large space for packing and organization.

**Material:** Durable Canvas

**Graphic:** Multiple Patches + Prints

**Capacity:** 43L

**Size:** 22" x 12" x 10" (56 x 30 x 25 cm)

**Model #:** 92448







### Sport Stripe Backpack

**Features:** Classic design with iconic HD stripe. Multiple interior and exterior pockets. Open side water bottle pocket. Padded, adjustable backpack straps.

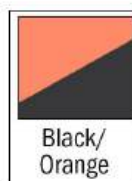
**Material:** Rugged, high-density polyester

**Graphic:** Sport Stripe

**Capacity:** 20L

**Size:** 17" x 12" x 6" (43 x 30 x 15 cm)

**Model #:** 99531



### Sport Stripe Duffel

**Features:** Classic design with iconic HD stripe. Water-repellent polyester with large dual-zippered main compartment for easy access.

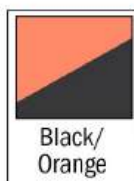
**Material:** Rugged, high-density polyester

**Graphic:** Sport Stripe

**Capacity:** 43L

**Size:** 22" x 12" x 10" (56 x 30 x 25 cm)

**Model #:** 99633





### **Denim Backpack**

**Features:** Timeless washed denim embroidered with rose details. Lined interior compartment has multiple pockets and a padded laptop sleeve. Padded, adjustable backpack straps.

**Material:** Washed Denim

**Graphic:** Embroidered Rose

**Capacity:** 22L

**Size:** 17" x 13" x 6" (43 x 33 x 15 cm)

**Model #:** 91330



### **Denim Overnight Tote**

**Features:** Timeless washed denim embroidered with rose details and satin hardware. Secure double zip top opening with multiple interior pockets for easy access and organization. Reinforced double handles.

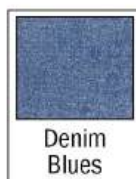
**Material:** Washed Denim

**Graphic:** Embroidered Rose

**Capacity:** 35L

**Size:** 15" x 13" x 11" (38 x 33 x 28 cm)

**Model #:** 91335





## Women's Duffel with Studs

**Features:** Durable exterior with stylish silver studs and leather trim. Roomy, lined main compartment. Multiple ways to carry with double handles and removable adjustable shoulder strap.

**Material:** Fashionable Polyester

**Graphic:** 3D Scripted Logo

**Capacity:** 43L

**Size:** 22" x 12" x 10" (56 x 30 x 25 cm)

**Model #:** 90831



## Women's Overnight Tote with Studs

**Features:** Stylish silver studs and leather trim. Secure double zip top opens wide to large main compartment with multiple pockets for easy organization.

**Material:** Fashionable Polyester

**Graphic:** 3D Scripted Logo

**Capacity:** 45L

**Size:** 23" x 15" x 8" (58 x 38 x 20 cm)

**Model #:** 90832



## Women's Classic Backpack with Studs

**Features:** Bold, stylish silver-studded front pocket delivers quick access to personal essentials. The padded interior laptop sleeve offers plenty of protection, while the padded straps provide ease and mobility.

**Material:** Fashionable Polyester

**Graphic:** 3D Scripted Logo

**Capacity:** 20L

**Size:** 17" x 13" x 5.5" (43 x 33 x 14 cm)

**Model #:** 90830







## Heritage Canvas Classic Backpack

**Features:** Rugged exterior leather HD logo patch with premium leather trim. The padded interior laptop compartment protects digital devices, and the adjustable straps deliver comfort.

**Material:** Durable Canvas

**Graphic:** Embossed Leather Patch

**Capacity:** 19.5L

**Size:** 16.5" x 12 x 6" (42 x 30.5 x 15 cm)

**Model #:** 90340



## Heritage Canvas Duffel

**Features:** Secure zip-top design provides easy access to a spacious interior. Premium leather-wrapped handles, trim, shoulder strap, and a durable reinforced bottom.

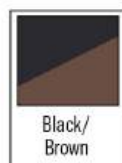
**Material:** Durable Canvas

**Graphic:** Embossed Leather Patch

**Capacity:** 43L

**Size:** 22" x 12" x 10" (56 x 30.5 x 25 cm)

**Model #:** 90342



## Heritage Canvas Freestyle Backpack

**Features:** Iconic top-flap backpack with premium leather straps and trim. Multiple exterior buttoned pockets for easy organization along with a large capacity main compartment.

**Material:** Durable Canvas

**Graphic:** Embossed Leather Patch

**Capacity:** 18L

**Size:** 18" x 12" x 5" (46 x 30.5 x 13 cm)

**Model #:** 90343





## 24" Dura-Duffel (Medium)

**Features:** Reinforced bottom for greater durability, comfort grip handle and strap, exterior front zippered pocket for quick access to personal items, pouch included for convenient storage when not in use and graphic wall display for selling

**Material:** Rugged, high density nylon

**Graphic:** 3D Embroidered Classic Bar & Shield

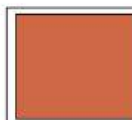
**Capacity:** 48L

**Size:** 24" x 11" x 11" (61 x 28 x 28 cm)

**Model #:** 90332



Black



Orange



## 30" Dura-Duffel (Large)

**Features:** Reinforced bottom for greater durability, comfort grip handle and strap, exterior front zippered pocket for quick access to personal items, pouch included for convenient storage when not in use and graphic wall display for selling

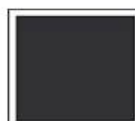
**Material:** Rugged, high density nylon

**Graphic:** 3D Embroidered Classic Bar & Shield

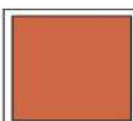
**Capacity:** 96L

**Size:** 30" x 15" x 13" (76 x 38 x 33 cm)

**Model #:** 90333



Black



Orange





## Core Collections

Dura-Duffels are shipped in a coordinating storage pouch that includes all product details.

This makes it easy to merchandise more inventory in less space!







## Ponderosa Backpack w/ USB Port

**Features:** External USB Port for easy access to personal power bank, exterior front pocket and two side pockets for personal items, padded laptop compartment that provides ample protection, stylish antique brass hardware

**Material:** Rugged Ballistic Nylon and Leather trim

**Graphic:** Embossed Leather Patch

**Capacity:** 20L

**Size:** 19" x 12.5" x 5.5" (48 x 32 x 14 cm)

**Model #:** 93813



## Ponderosa Duffel

**Features:** Roomy interior compartment has capacity for many personal items, multiple external pockets makes organizing easy, top grip handle and adjustable, padded backpack straps for ease of carrying

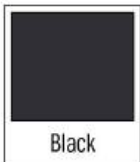
**Material:** Rugged Ballistic Nylon and Leather trim

**Graphic:** Embossed Leather Patch

**Capacity:** 45L

**Size:** 21" x 11.5" x 11.5" (53 x 29 x 29 cm)

**Model #:** 90221

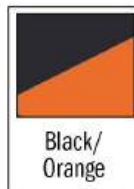




### **Rumble Backpack**

**Features:** Constructed of lightweight, rugged material. Includes an exterior vertical front zippered mesh pocket for access to smaller items. Padded backpack straps for carrying comfort.

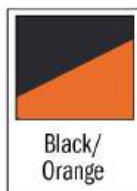
**Material:** Polyester w/ Mesh  
**Graphic:** 3D Classic Rubber Bar & Shield  
**Capacity:** 17L  
**Size:** 17" x 12" x 5" (43 x 30 x 13 cm)  
**Model #:** 90624



### **Rumble String Backpack**

**Features:** Lightweight, with a large main compartment and quick access vertical zip pocket to hold small items while on-the-go.

**Material:** Polyester w/ Mesh  
**Graphic:** 3D Classic Rubber Bar & Shield  
**Capacity:** 4L  
**Size:** 19" H x 13" L (48 x 33 cm)  
**Model #:** 90625





## Willie G Skull Renegade Backpack

**Features:** External USB Port for easy access to personal power bank, hideaway rain cover to keep belongings dry, protective eyeglass pocket with non-scratch interior

**Material:** Lightweight, water-resistant fabric

**Graphic:** Willie G Skull

**Capacity:** 31L

**Size:** 18" x 13" x 8" (46 x 33 x 20 cm)

**Model #:** 99207



Willie G  
Skull

## Willie G Skull Duffel with Side Shoe Pocket

**Features:** Waterproof side wet pocket keeps shoes and soiled clothes separate from all other items, use either the top carry handle or the adjustable shoulder strap for ease of mobility

**Material:** Water-resistant 100% nylon exterior

**Graphic:** Willie G Skull

**Capacity:** 34L

**Size:** 21" x 10" x 10" (53 x 25 x 25 cm)

**Model #:** 90331



Willie G  
Skull

## Willie G Skull Quick-Draw Backpack

**Features:** Dual drawstring converts to backpack or carry-all bag, Large opening for your gear on-the-go

**Material:** Rugged, high-density polyester

**Graphic:** Willie G Skull

**Capacity:** 3.8L

**Size:** 17" H x 13.75" L (43 x 35 cm)

**Model #:** 98667



Willie G  
Skull





## On-Tour Wheeling Backpack w/ USB Port

**Features:** Versatile wheeling backpack provides multiple modes of mobility, external USB Port for easy access to personal power bank

**Material:** High-Density rugged polyester

**Graphic:** Embroidered logo

**Capacity:** 41L

**Size:** 22" x 13.5" x 8.5" (56 x 34 x 22 cm)

**Model #:** 93826



## On-Tour 3-Piece Wheeling Duffel Set

**Features:** Split construction provides two main packing compartments, hideaway telescoping handle and in-line skate wheel system for ease of mobility, adjustable compression straps to secure belongings

**Material:** Water-resistant boxweave polyester

**Graphic:** Embroidered logo

**Capacity:** varies

**Size:** 22", 28", 33" (56, 71, 84 cm)

**Model #:** 90426 (28"), 90433 (33"), 90477 (Nested Set)



Airline Approved  
Carry-On

33" X-Large  
(90433)

28" Large  
(90426)

22" Carry-on  
(90422)  
(Only Available in Nested Set)



## Rebel Hop Along Duffel with Rain Cover

**Features:** Hideaway rain cover to keep belongings dry, two end pockets to organize personal items, detachable/adjustable shoulder strap for ease of mobility

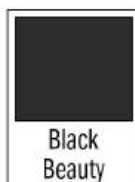
**Material:** Rugged, high-density polyester

**Graphic:** Embroidered Velcro HD logo

**Capacity:** 26L

**Size:** 16" x 10" x 10" (41 x 25 x 25 cm)

**Model #:** 99211



## Rebel 24" Duffel

**Features:** Interior mesh pockets, compression straps, easy grab handles. Multi-functional as a backpack or carried with a padded removable shoulder strap, Molle straps for convenience

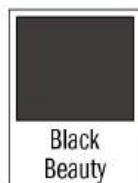
**Material:** Rugged, high-density polyester

**Graphic:** Embroidered Velcro HD logo

**Capacity:** 54L

**Size:** 24" x 12" x 11.5" (61 x 30 x 29 cm)

**Model #:** 90236



## Rebel Travel Tote

**Features:** Large zip-top main opening for maximum capacity and front molle straps.

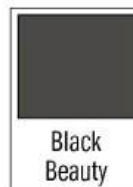
**Material:** Rugged, high-density polyester

**Graphic:** Embroidered Velcro HD logo

**Capacity:** 48L

**Size:** 23" x 15" x 8.5" (58 x 38 x 22 cm)

**Model #:** 90235



33" X-Large  
(90433)

## Rebel On-Tour Wheeling Duffel w/ SHARK WHEELS®

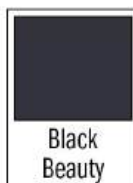
**Features:** Split construction provides two main packing compartments, hideaway telescoping handle and Shark Wheels for ease of wheeling, adjustable compression straps to secure belongings

**Material:** Rugged, high-density polyester

**Graphic:** Embroidered Velcro HD logo

**Size:** 33" (84cm)

**Model #:** 90433 (33")





## Core Collections



### Nomad 22" Gear Duffel (Small)

**Features:** Metal pop-up frame provides support and structure and folds down flat for easy storage, internal mesh pockets for added organization. A great alternative bag for everyone's riding adventure

**Graphic:** Printed Bar & Shield

**Capacity:** 52L

**Size:** 22" x 12.5" x 11.5" (56 x 32 x 29 cm)

**Model #:** 90531



Black



Vintage Orange

### Nomad 32" Gear Duffel (Large)

**Features:** Metal pop-up frame provides support and structure and folds down flat for easy storage, internal mesh pockets for added organization. A great alternative bag for everyone's riding adventure

**Graphic:** Printed Bar & Shield

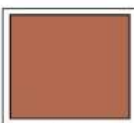
**Capacity:** 105L

**Size:** 32" x 16" x 12.5" (81 x 41 x 32 cm)

**Model #:** 90532



Black



Vintage Orange



### Nomad Duffel

**Features:** Large opening to the main compartment for ease of packing, interior mesh pocket under lid for small items, padded/removable shoulder strap for carry-mode flexibility

**Material:** Water-resistant polyester

**Graphic:** Bar & Shield Logo & Letters

**Capacity:** 47L

**Size:** 21" x 12" x 11.5" (53 x 30 x 29 cm)

**Model #:** 90520



Black Beauty w/ Wild Lime



Grape Leaf w/ Black



Airline Approved  
Carry-On



Black  
29"  
90529



Black  
25"  
90525



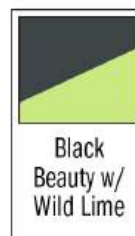
Black  
21"  
90521



## Nomad Wheeling Duffel w/SHARK WHEELS®

**Features:** Shark Wheels for easier rolling and durability, telescoping hideaway pull handle for improved mobility — generous main compartment to pack all travel essentials.

**Material:** Water-resistant polyester  
**Graphic:** Bar & Shield Logo & Letters  
**Capacity:** varies  
**Size:** 21", 25", 29" (53, 63, 73 cm)  
**Model #:** 90530 (nested), 90521 (22"), 90525 (25"), 90529 (29")



Black  
Beauty w/  
Wild Lime



Grape Leaf  
w/ Black



Grape Leaf  
29"  
90529



Grape Leaf  
25"  
90525



Grape Leaf  
21"  
90521

Hi-Performance, Revolutionary  
**Shark Wheels®**





## Rugged Twill Convertible Duffel-Backpack

**Features:** Large interior compartment for packing belongings, provides multiple mobility modes, the back sleeve makes it easy to attach to wheeled luggage

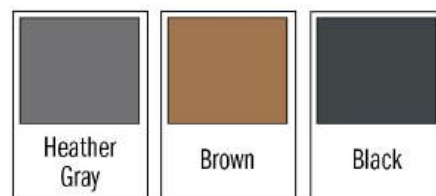
**Material:** Water-resistant polyester twill fabric

**Graphic:** Embroidered logo

**Capacity:** 43L

**Size:** 20" x 12" x 11" (51 x 30 x 28 cm)

**Model #:** 90325



Airline Approved Carry-On



90721 – 21" Carry-On

## Rugged Twill Rolling Duffel

**Features:** Hideaway telescoping pull handle and in-line skate wheels for ease of mobility, front zippered accessory pocket to secure personal items, multiple carry handles for user-friendly lifting and carrying

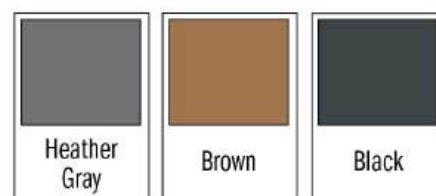
**Material:** Water-resistant polyester twill fabric

**Graphic:** Embroidered logo

**Capacity:** varies

**Size:** 21", 26", 29" (53, 63, 74 cm)

**Model #:** 90721 (21"), 90726 (26"), 90729 (29")



90726 – 26" Medium



90729 – 29" Large



## Revolution Half-Helmet Backpack

**Features:** Perfect fit for 1/2 helmet, has the versatility to also be used as a carry-all bag, expandable side for larger items, detachable/adjustable shoulder strap which can become Backpack straps for carrying

**Material:** Rugged, high-density polyester  
**Graphic:** Embroidered Classic Bar & Shield  
**Capacity:** 3.8L  
**Size:** 16" H x 14.5" L (41 x 37 cm)  
**Model #:** 99527



## Revolution Duffel w/ Side Shoe Pocket

**Features:** Waterproof side wet pocket keeps shoes and soiled clothes separate from all other items, use either the top carry handle or the adjustable shoulder strap for ease of mobility

**Material:** Water-resistant 100% nylon exterior  
**Graphic:** Embroidered Classic Bar & Shield  
**Capacity:** 34L  
**Size:** 21" x 10" x 10" (53 x 25 x 25 cm)  
**Model #:** 90331



## Revolution Backpack

**Features:** Multiple interior and exterior organizer pockets to make packing easy, fully padded back panel for carrying comfort

**Material:** Water-resistant 100% Nylon exterior  
**Graphic:** Embroidered Classic Bar & Shield  
**Capacity:** 39L  
**Size:** 17.8" x 14" x 9.5" (47 x 35.5 x 24 cm)  
**Model #:** 93814







### Insulated Tour Pack

**Features:** Insulated cooling padding throughout, easy access wide mouth opening to main compartment, top carry handle with wrap for comfort while carrying

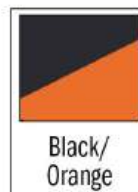
**Material:** Lightweight, water-resistant ripstop honeycomb polyester

**Graphic:** Embroidered logo

**Capacity:** 14L

**Size:** 19" x 9" x 4.8" (48 x 23 x 12 cm)

**Model #:** 99306



### Trunk & Garage Organizer

**Features:** Movable dividers on the top level make it simple to customize sections, multiple interior pockets allow for easy organization, grips for tools and accessories, comes in a color box for display.

**Material:** Lightweight, water-resistant polyester

**Graphic:** Embroidered logo

**Capacity:** 46L

**Size:** 24" x 13" x 9" (61 x 33 x 23 cm)

**Model #:** 99615





## Accessory & Tool Bag

**Features:** Superior organization with 8 exterior pockets and 11 interior pockets, hinged frame opening for instant access to interior compartment, sturdy carry handle and detachable/adjustable shoulder strap to make it easy take it anywhere

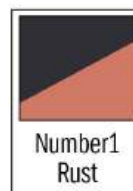
**Material:** Lightweight, water-resistant polyester

**Graphic:** Embroidered logo

**Capacity:** 30L

**Size:** 20" x 10.8" x 8.5" (51 x 27 x 22 cm)

**Model #:** 99108



## 39-Pocket Tool Bag

**Features:** The ultimate in tool organization with 25 exterior pockets and 14 interior pockets, external heavy-gauge metal clip for tape measure, full zip opening provides maximum visibility

**Material:** Lightweight, water-resistant polyester

**Graphic:** Embroidered logo

**Capacity:** 37L

**Size:** 17.8" x 9.8" x 14" (45 x 25 x 36 cm)

**Model #:** 99103





## STARTING LINE UP NEW PRODUCTS

S

STARTING LINE UP

Starting Line Up highlights best sellers and represents iconic styling and silhouettes that our customers know and love. These styles should serve as the essentials foundation of the retail product offer.



### Graphic Duffels

90410 American Flag

Pg. 5



### Graphic Duffels

90410 Grape Leaf/  
Willie G Skull

Pg. 10



### Chest Sling Bag

99705 Willie G Skull,  
Moonshadow

Pg. 4



### Cruiser Softside Luggage

984-xx-3S Black

Pg. 3





**Storm Backpack**  
92441 Black/Orange  
Pg. 8



**Mega-Pack Backpack**  
93510 Black/Gray  
Pg. 9



**Renegade III Backpack**  
99209 Midnight/Orange,  
Gray/Black  
Pg. 9



**Nomad Gear Basket (Large)**  
95275 Black/Orange  
Pg. 7



**Sportsman's Utility Case**  
94958 Black, Realtree Camo  
Pg. 7



**Black Opal II Backpack**  
94520 Asphalt, Oil Green  
Pg. 11



**Black Opal II Duffel**  
94530 Asphalt, Oil Green  
Pg. 11

## STARTING LINE UP CORE/REPLEN ITEMS

# S

### STARTING LINE UP

Starting Line Up highlights best sellers and represents iconic styling and silhouettes that our customers know and love. These styles should serve as the essentials foundation of the retail product offer.



#### Graphic Duffels

90410  
Pg. 17



#### Graphic Backpacks

90815  
Pg. 18



#### Legend Backpack

90231  
Pg. 21



#### Cruiser Hardside Luggage

979-xx-3S  
Pg. 13



#### Touring Hardside Luggage

968-xx-3S  
Pg. 14



#### Luggage Tags

952-99-00  
Pg. 15



**Rebel Backpack**  
90230  
Pg. 23



**Ponderosa Backpack**  
93813  
Pg. 33



**Women's Classic Backpack w/ Studs**  
90830  
Pg. 29



**Vintage Backpack**  
92445  
Pg. 26



**Sport Stripe Backpack**  
99531  
Pg. 27



**Denim Backpack**  
91330  
Pg. 28



**Tour Pack**  
99306  
Pg. 42



**Nomad 22" Gear Duffel**  
90531  
Pg. 38



**24" Medium Dura-Duffel**  
90332  
Pg. 31



# LAST CALL



New Fall/Winter 2025	3 - 5
New Spring/Summer 2026	7 - 11
Hardside Luggage & Accessories	13 - 15
Core Graphic Duffels & Backpacks	17 - 18
Core Backpacks	20 - 24
Core Collections	26 - 43
Starting Line-Up's	44 - 47
Last Call	49 - 55



## Rebel Daypack

**Features:** Multiple zippered openings including a laptop compartment, great riding size bag to fit all your essentials

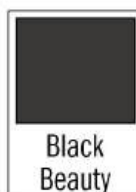
**Material:** Rugged, high-density polyester

**Graphic:** Embroidered Velcro HD logo

**Capacity:** 21L

**Size:** 18" x 12" x 6" (46 x 30 x 15 cm)

**Model #:** 90234



## Rugged Twill Backpack

**Features:** Front pocket plus top zippered accessory pocket for easy organization, large main compartment with padded laptop section to pack and secure personal items, adjustable, padded backpack straps with cushioned back panel for carrying comfort

**Material:** Water-resistant polyester twill fabric

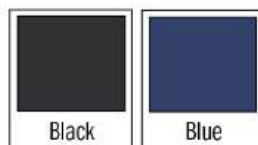
**Graphic:** Embroidered - lettered

Harley-Davidson

**Capacity:** 17L

**Size:** 17.5" x 12" x 5" (44.5 x 30.5 x 12.7 cm)

**Model #:** 90224





## Street Cruiser Backpack

**Features:** Large capacity provides space for personal belongings, top opening design provides easy access

**Material:** Recycled polyester with durable, water-repellent finish

**Graphic:** Embroidered Bar & Shield

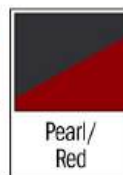
**Capacity:** 20L

**Size:** 18" x 11" x 7" (46 x 28 x 18 cm)

**Model #:** 90232



Blue/Black



Pearl/  
Red

## Silverado 21" Convertible Duffel-Backpack

**Features:** Roomy main compartment offers plenty of packing space, carry as a duffel or backpack for ease of mobility, wet/shoe pocket to separate wet or dirty items

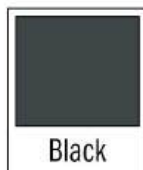
**Material:** Lightweight, water-resistant polyester weave

**Graphic:** Embroidered Logo

**Capacity:** 42L

**Size:** 21" x 11" x 11" (53 x 28 x 28 cm)

**Model #:** 90329



Black



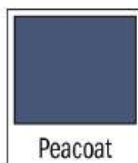




## Black Opal Tote-Backpack

**Features:** Carry by top handles or worn as a backpack. Hideaway backpack straps with wide "doctor's" style opening.

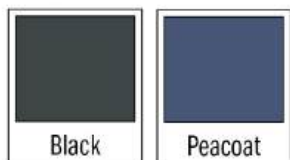
**Material:** Water-resistant Oxford Nylon  
**Graphic:** Embroidered Script Harley-Davidson  
**Capacity:** 19L  
**Size:** 15" x 11" x 7" (38 x 28 x 18 cm)  
**Model #:** 90544



## Black Opal Weekender/Overnight Duffel

**Features:** Separate bottom for organization with large compartment. Piggyback strap for attaching to luggage.

**Material:** Water-resistant Oxford Nylon  
**Graphic:** Embroidered Script Harley-Davidson  
**Capacity:** 30L  
**Size:** 17.7" x 11.8" x 8.7" (45 x 12 x 9 cm)  
**Model #:** 90545



## Black Opal Travel Tote

**Features:** Wide-mouth opening to large main compartment. Front accessory pocket with detachable/adjustable shoulder straps

**Material:** Water-resistant Oxford Nylon  
**Graphic:** Embroidered Script Harley-Davidson  
**Capacity:** 32L  
**Size:** 22" x 11" x 8" (56 x 28 x 20 cm)  
**Model #:** 99317



## Black Opal Backpack

**Features:** Multiple organization pockets with separate laptop section. Padded backpack straps for comfort when carrying

**Material:** Water-resistant Oxford Nylon  
**Graphic:** Embroidered Script Harley-Davidson  
**Capacity:** 33L  
**Size:** 17.5" x 12.8" x 9" (44.5 x 32.5 x 23 cm)  
**Model #:** 90228





## Sport & Travel Duffel

**Features:** Main compartment with wide zip-top opening for easy access packing, zippered wet pocket to separate damp or soiled items

**Material:** Lightweight, water-resistant polyester

**Graphic:** Embroidered logo

**Capacity:** 43L

**Size:** 20" x 13" x 10" (51 x 33 x 25 cm)

**Model #:** 90549



## Travel Duffel-Backpack

**Features:** Main interior compartment with compression straps to hold down & organize contents, large padded laptop compartment securely holds up to a 17" laptop, wet/shoe pocket to separate wet or dirty items

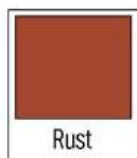
**Material:** Lightweight, water-resistant polyester

**Graphic:** Embroidered logo

**Capacity:** 30L

**Size:** 22" x 13" x 6" (57 x 34 x 16 cm)

**Model #:** 90547



## 29" Super Wheeling Organizer Duffel

**Features:** "Trap door" in over-under section provides easy access to bag's main section, hideaway telescoping pull handle and in-line skate wheels offer ease of mobility, adjustable external compression straps protect zippers and secure belongings

**Material:** Lightweight, water-resistant polyester

**Graphic:** Embroidered logo

**Capacity:** 103L

**Size:** 29" x 15" x 14" (73.6 x 38 x 37 cm)

**Model #:** 90614







## 21" Weekend Duffel w/ Backpack Straps

**Features:** Roomy main compartment offers plenty of packing space, carry as a duffel or backpack for ease of mobility, stylish and functional accessory carry loops around the exterior of the bag

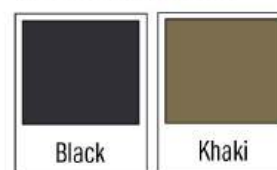
**Material:** Water-resistant, high-performance TPE coated exterior

**Graphic:** 3D Rubber Logo

**Capacity:** 46L

**Size:** 20.5" x 12" x 11.5" (52 x 30 x 29 cm)

**Model #:** 90328



## Duffel-Backpack w/ USB Port

**Features:** Roomy main compartment offers plenty of packing space, carry as a duffel or backpack for ease of mobility, external USB Port for easy access to personal power bank

**Material:** Water-resistant, high-performance TPE coated exterior

**Graphic:** 3D Rubber Logo

**Capacity:** 37L

**Size:** 20" x 12.5" x 9" (51 x 32 x 23 cm)

**Model #:** 90326



## Barrel Duffel w/ Backpack Straps

**Features:** Center zippers offer easy access to main duffel-style interior compartment, drawstring top opens to separate space for shoe/wet bag, protective padded laptop pocket provides peace of mind

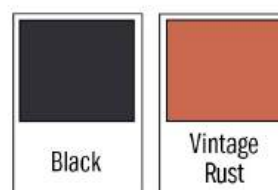
**Material:** Water-resistant, high-performance TPE coated exterior

**Graphic:** 3D Rubber Logo

**Capacity:** 33L

**Size:** 20" x 10.5" x 9.5" (51 x 27 x 24 cm)

**Model #:** 90327





## **Waterproof Backpack**

**Features:** Waterproof dry backpack with easy access roll-top opening with buckle to secure contents, adjustable padded backpack and sternum straps for comfort and support

**Material:** Waterproof made of tarpaulin fabric coated with TPU

**Graphic:** Screen Printed Logo

**Capacity:** 40L

**Size:** 22" x 14" x 8" (56 x 36 x 20 cm)

**Model #:** 90223



Khaki



## **Waterproof Duffel**

**Features:** Waterproof dry duffel with heat-sealed seams, roll-and-cinch closure securely seals main compartment

**Material:** Waterproof made of tarpaulin fabric coated with TPU

**Graphic:** Screen Printed Logo

**Capacity:** 68L

**Size:** 25" x 14" x 12" (64 x 36 x 30 cm)

**Model #:** 90324



Khaki

## 21" Carry-On Wheeling Duffel

**Features:** Wheeled waterproof duffel dry bag with heat-sealed seams, in-line skate wheels and hideaway telescoping pull handle for ease of mobility, top carry handle with wrap for comfort while carrying

**Material:** Waterproof 1680D Oxford Cloth coated with TPU

**Graphic:** Screen Printed Logo

**Capacity:** 45L

**Size:** 21" x 12" x 11" (53 x 30 x 28 cm)

**Model #:** 90608



Airline Approved  
Carry-On



## 29" Large Wheeling Duffel

**Features:** Large size wheeled waterproof duffel dry bag with heat-sealed seams, in-line skate wheels and hideaway telescoping pull handle for ease of mobility, wide zippered opening to main compartment for easy access

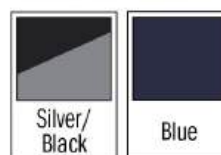
**Material:** Waterproof 1680D Oxford Cloth coated with TPU

**Graphic:** Screen Printed Logo

**Capacity:** 96L

**Size:** 29" x 15" x 13.5" (74 x 38 x 34 cm)

**Model #:** 90609



## Waterproof 29" Duffel (110L)

**Features:** Medium size waterproof dry bag with heat-sealed seams, side grip handle for easy lifting, convertible carry options as either a duffel or a backpack

**Material:** Waterproof 1680D Oxford Cloth coated with TPU

**Graphic:** Screen Printed Logo

**Capacity:** 110L

**Size:** 29" x 16" x 15" (48 x 41 x 38 cm)

**Model #:** 90611



## Waterproof 33" Duffel (155L)

**Features:** Large waterproof dry bag with heat-sealed seams, wide zippered opening to main compartment for easy access, convertible carry options as either a duffel or a backpack

**Material:** Waterproof 1680D Oxford Cloth coated with TPU

**Graphic:** Screen Printed Logo

**Capacity:** 155L

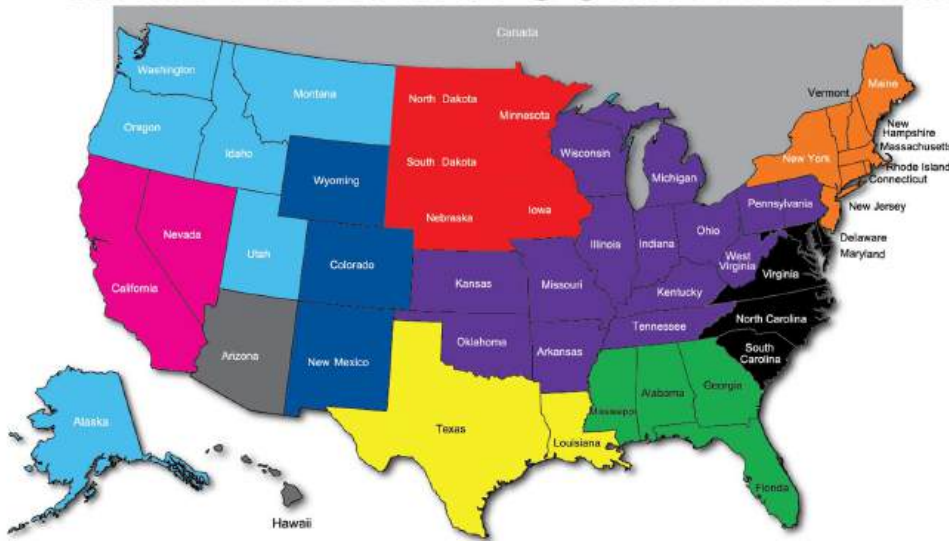
**Size:** 33" x 17.5" x 16.5" (84 x 44 x 42 cm)

**Model #:** 90612





# HARLEY-DAVIDSON DEALER REP TERRITORIES



**CANADA DISTRIBUTORS**  
SKIWAKA - 1207 Sandy Hill Road  
Hawkesbury - Ontario K6A 2R2  
www.skiwaka.com

Julie Wolfe  
Ph: (613) 676-3882  
julie@skiwaka.com

Caroline Sauve  
Ph: (613) 676-2882  
caroline@skiwaka.com



## **NORTHWEST (AK/ID/MT/UT/OR/WA)**

Dana German  
Milwaukie, OR 97222  
Ph: (503) 936-5399  
Fax: (888) 522-6771  
dana@positionofstrength.net



## **SOUTHWEST (TX/LA)**

Norm & Gail Olley - MDS  
906 Timber Creek Drive - Lewisville, TX 75067  
Cell: (214) 505-5365  
Fax: (972) 499-0043  
mdsnorm@gmail.com  
mdsgail@gmail.com



## **CENTRAL EAST & WEST (ND/SD/NE/IA/MN)**

Sidelines USA  
Terry O'Brien  
70366 219th St. - Dassel, MN 55325  
Cell: (763) 267-2373  
Fax: (888) 648-8638  
Terry@sidelinesusa.com



## **NORTHEAST COAST (NJ/NY/CT/RI/MA/VT/NH/ME/NY)**

Dale Corvino  
433 W 34th Street - NY, NY 10001  
Ph: (347) 834-2820  
Fax: (347) 391-2700  
dale.corvino@gmail.com



## **WEST (CA/NV)**

Keith Black  
KB Rep Group  
Ph: (805) 286-6363  
Fax: (800) 603-4154  
kbregroup@gmail.com



## **NORTH CENTRAL (WI/IL/IN/MI/OH/PA/KY/TN/WV/PA/OK/KS/MO/AR)**

Mid West Motor Clothes & Accs, LLC  
5469 Salem Drive - Westerville, OH 43082  
  
Bill Clower  
Ph: (614) 286-7445  
Fax: (614) 891-9853  
bclower@insight.rr.com  
  
Eric Feinberg  
Ph: (740) 815-2947  
Fax: (855) 231-3346  
efeinberg66@gmail.com  
  
Mike Doran  
Ph: (913) 486-6497  
motorbikemike61@gmail.com  
  
Julie Sockrider  
Ph: (614) 929-4375  
Fax: (614) 891-9853  
juliesockrider@gmail.com  
  
Bill Eldridge  
Ph: (248) 877-7417  
Fax: (614) 891-9853  
billeldridge@comcast.com



## **MID-ATLANTIC (DE/MD/VA/NC/SC)**

Keith Bowen - North  
Ph: (410) 267-0564  
Cell: (443) 994-3886  
Fax: (941) 827-9410  
bowen324@comcast.net



## **WEST & PACIFIC (AZ/HI)**

Eric Goldner  
Ph: 516-840-8340  
eric@athalon.com



## **SOUTHEAST (AL/GA/FL/MS)**

James White - South  
Ph: (941) 359-2015  
Cell: (941) 586-0020  
Fax: (941) 827-9410  
jhw.fla@gmail.com



## **MOUNTAINS (WY/CO/NM)**

Rhonda Vandenbos  
Ph: (303) 503-2413  
rhondavandenbos1@gmail.com

Ed Evans - South  
Cell: (712) 363-3050  
royeevans79@gmail.com

## **ASIA PACIFIC (China, Japan, Korea, Hong Kong, Taiwan, Singapore, Thailand, Philippines, Vietnam, Macau, Guam Indonesia, Malaysia, Myanmar)**

Roseanne Fu  
Nine Orient Consulting  
Unit 611, 6/F, Trendy Centre  
682 Castle Peak Road  
Cheung Sha Wan, Kowloon  
Hong Kong  
Ph: (+852) 9444 1494  
roseanne.fu@nineorient.com

## **EUROPE DISTRIBUTOR**

Enzo Milioto - General Manager  
OkisOment Distribution & Production  
Service GmbH  
Am Holzweg 28-32  
Kriftel 65830 Germany  
Ph: +49 (0) 6192-97-59-190  
Fax: +49 (0) 6192-97-59-109  
e.milioto@okisonent.de  
www.okisonent.de

## **AUSTRALIA/NEW ZEALAND**

Scott Chinnock  
Fashion Hub Pty Ltd  
14/163-179 Forster Road  
Mount Waverley, 3149  
Victoria, Australia  
Ph: + 61 411 052 284  
scott.chinnock@fashion-hub.com.au

## **LATAM & PUERTO RICO**

Gina Mandella  
Ph: (262) 422 2599  
gina@cachaisales.com

**ATHALON®**

Ph: (212) 268-8070  
Fax: (212) 268-8089

Orders@AthalonSportgear.com  
www.AthalonSportgear.com

Harley-Davidson, Harley, H-D and the Bar & Shield  
are among the trademarks of  
Harley-Davidson Motor Company  
©2025 H-D, All Rights Reserved.  
Manufactured by Athalon Sportsgear, Inc.  
under license from Harley-Davidson Motor Company